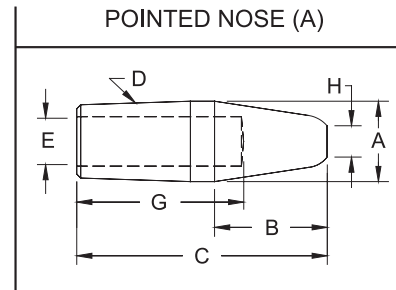
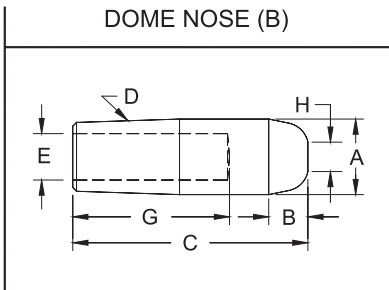


STRAIGHT ELECTRODES



4 RW TAPER (D)			
CMW [®] 28	CMW [®] 3	CMW [®] 100	Nose Length B
Class 1	Class 2	Class 3	
1111	3111	5111	13/64
1112	3112	5112	1/4
1113	3113	5113	1/4
1114	3114	5114	1/4
1115	3115	5115	
1116	3116	5116	
1117	3117	5117	1/4
1118	3118	5118	
1119	3119	5119	
11112	31112	51112	1/4
11114	31114	51114	
11116	31116	51116	
11118	31118	51118	1/4

COMMON DIMENSIONS				
Face Dia. H	Major Dia. A	Water Hole Dia. E	Overall Length C	Hole Depth G
3/16	.482	9/32	1	5/8
			1-1/4	3/4
			1-1/2	1
			1-3/4	1-1/4
			2	1-1/2
			2-1/4	1-3/4
			2-1/2	2
			2-3/4	2-1/4
			3	2-1/2
			3-1/4	2-3/4
			3-1/2	3
			3-3/4	3-1/4
4	3-1/2			

4 RW TAPER (D)			
CMW [®] 28	CMW [®] 3	CMW [®] 100	Nose Length B
Class 1	Class 2	Class 3	
1211	3211	5211	3/8
1212	3212	5212	3/8
1213	3213	5213	5/8
1214	3214	5214	3/4
1215	3215	5215	
1216	3216	5216	
1217	3217	5217	3/4
1218	3218	5218	
1219	3219	5219	
12112	32112	52112	3/4
12114	32114	52114	
12116	32116	52116	
12118	32118	52118	3/4

5 RW TAPER (D)			
CMW [®] 28	CMW [®] 3	CMW [®] 100	Nose Length B
Class 1	Class 2	Class 3	
1122	3122	5122	3/8
1123	3123	5123	
1124	3124	5124	
1125	3125	5125	3/8
1126	3126	5126	
1127	3127	5127	
1128	3128	5128	3/8
1129	3129	5129	
11212	31212	51212	
11214	31214	51214	3/8
11216	31216	51216	
11218	31218	51218	
11220	31220	51220	3/8
11222	31222	51222	

COMMON DIMENSIONS				
Face Dia. H	Major Dia. A	Water Hole Dia. E	Overall Length C	Hole Depth G
1/4	.625	3/8	1-1/4	3/4
			1-1/2	3/4
			1-3/4	1
			2	1-1/4
			2-1/4	1-1/2
			2-1/2	1-3/4
			2-3/4	2
			3	2-1/4
			3-1/4	2-1/2
			3-1/2	2-3/4
			3-3/4	3
			4	3-1/4
4-1/4	3-1/2			
4-1/2	3-3/4			

5 RW TAPER (D)			
CMW [®] 28	CMW [®] 3	CMW [®] 100	Nose Length B
Class 1	Class 2	Class 3	
1222	3222	5222	1/2
1223	3223	5223	3/4
1224	3224	5224	3/4
1225	3225	5225	1-1/8
1226	3226	5226	
1227	3227	5227	
1228	3228	5228	1-1/8
1229	3229	5229	
12212	32212	52212	
12214	32214	52214	1-1/8
12216	32216	52216	
12218	32218	52218	
12220	32220	52220	1-1/8
12222	32222	52222	

*Electrodes of other tapers and alloys available upon request.